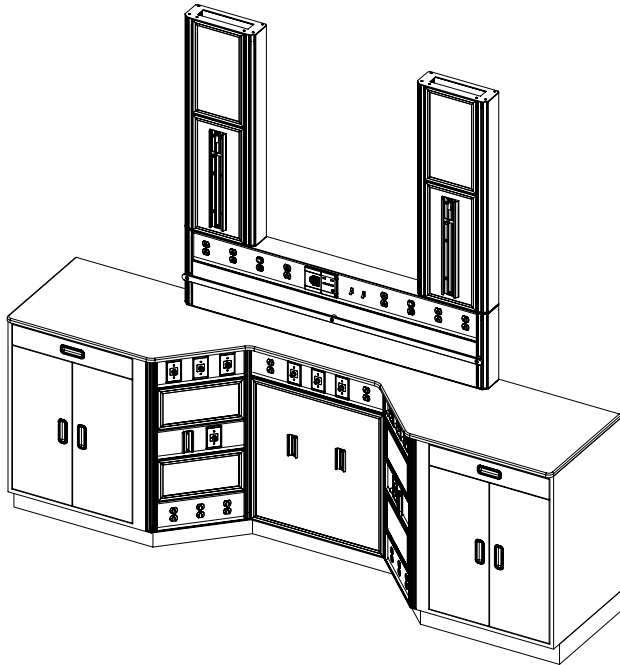


Aurora Series Neonatal Unit



Item number definition

NNU-1000

Standard Size:

Height: 96"

Depth: 24"

Width: 106"

Construction Specification

The Neonatal Unit shall be constructed of .094" thick 6063-t 5 alloy, extruded aluminium for the structural frame members. All exposed aluminium surface shall be clear anodized. The unit shall be equipped with Medical Design's 45° two track system as an integral part of the main frame, designed to manage hospital equipment and accessories both horizontally and vertically. An all aluminium fascia strip shall accept medical gas outlets and electrical devices. Cabinetry and drawers are made of fire-retardant hardwoods and composites. Exposed surfaces shall be finished with laminated panels according to the architect color selection.

This product is cULus listed.

Medical Gas

Medical gas outlets shall be supplied, installed and manifolded by Medical Design. Connection points for copper tubing are located above top of unit. Medical gas outlet will be manifolded with copper piping unless otherwise specified. Installation and testing shall comply with National Fire Protection Association (NFPA 99c) & C.R.N. (BNQ 5710-500, CSA 305.1 / B51-95).

Electrical Equipment

Electrical devices shall be supplied and pre-wired by Medical Design. Wiring shall run through metal raceway and terminate at the top of the unit connected to the Hospital electrical system. Conductors shall be No 12 stranded RW-90 copper wire for normal and emergency power circuits. All devices shall be grounded with #10 AWG green jacket stranded copper wire. All electrical receptacles are NEMA 5-15/20R, 125 volts AC, hospital grade and comply with CSA and are cULus listed.

Emergency receptacle shall be red in color and ivory for normal power.

Communication

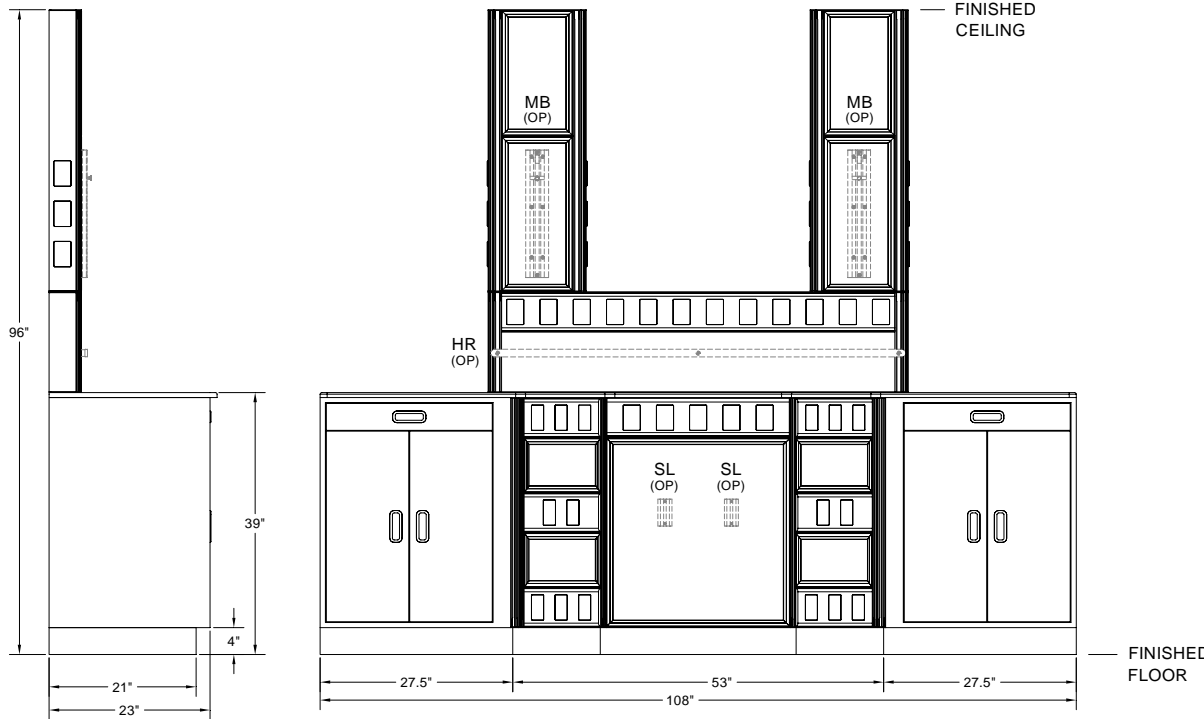
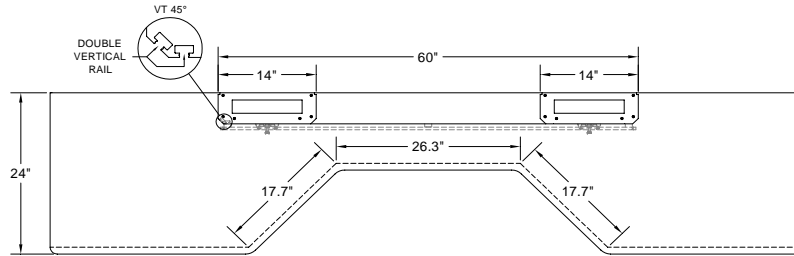
Communication devices shall be supplied and installed by others. Provisions for devices shall be coordinated with Medical Design.

Site Installation

All units shall be installed in accordance with Medical Design's installation instructions. The mechanical and electrical contractor shall provide the final connection to the Hospital System. The contractor has the responsibility to insure that every unit is subject to a final site inspection in compliance with all National, State and Local Codes.

Typical Shop Drawing

AURORA SERIES NEONATAL UNIT



(OP) = OPTIONAL

MEDICAL GAS		
ID	QTY	DESCRIPTION
O ₂	-	OXYGEN OUTLET ; Q.C. <input type="checkbox"/> OU D.I.S.S. <input type="checkbox"/>
A	-	MEDICAL AIR OUTLET ; Q.C. <input type="checkbox"/> OU D.I.S.S. <input type="checkbox"/>
V	-	VACUUM OUTLET ; Q.C. <input type="checkbox"/> OU D.I.S.S. <input type="checkbox"/>
N ₂	-	NITROGEN OUTLET ; D.I.S.S. ONLY <input type="checkbox"/>
N ₂ O	-	NITROUS OXIDE OUTLET ; Q.C. <input type="checkbox"/> OU D.I.S.S. <input type="checkbox"/>
EVAC	-	EVACUATION OUTLET ; Q.C. <input type="checkbox"/> OU D.I.S.S. <input type="checkbox"/>
CO ₂	-	CARBON DIOXIDE OUTLET ; D.I.S.S. ONLY <input type="checkbox"/>
ELECTRICITY AND COMMUNICATION		
DR	-	DUPLEX RECEPTACLE, 20A, 125V, H.G., (RED) EMERGENCY POWER (HUBBELL #8300HR)
DW	-	DUPLEX RECEPTACLE, 20A, 125V, H.G., (WHITE) NORMAL POWER (HUBBELL #8300HW)
SR	-	SIMPLEX RECEPTACLE, 20A, 125V, H.G., (RED) EMERGENCY POWER (HUBBELL #8310R)
SW	-	SIMPLEX RECEPTACLE, 20A, 125V, H.G., (WHITE) NORMAL POWER (HUBBELL #8310W)
LS	-	LIGHT SWITCH, 1P, 15A, 125V, (WHITE)
TW	-	TWIST-LOCK RECEPTACLE, 20A, 125V, H.G.
GR	-	GROUNDING RECEPTACLE, HAMPDEN SLR-3S
MO	-	MONITOR OUTLET PROVISION, 2 GANGS
NC	-	NURSE CALL PROVISION, 3 GANGS
CB	-	CODE BLUE PROVISION, 1 GANG
MO	-	MONITOR OUTLET PROVISION, 2 GANGS
D	-	DATA PROVISION, 1 GANG
T	-	TELEPHONE PROVISION, 1GANG
B	-	BLANK FACEPLATE, 1 GANG, STAINLESS STEEL
ACCESSORIES		
HR	-	HORIZONTAL RAIL
MB	-	MONITOR BRACKET, 19"
SL	-	VACUUM BOTTLE SLIDE

OTHER SERVICES AND ACCESSORIES ARE AVAILABLE. CONTACT US FOR MORE INFORMATION.